

Abmessungen / Dimensions

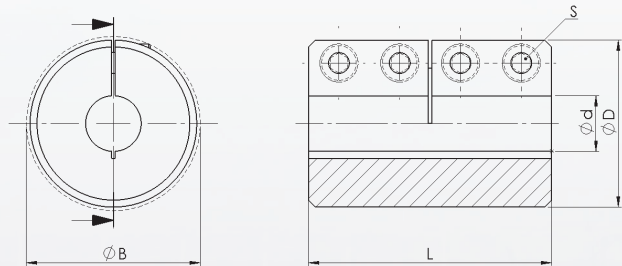
- ØD - Außendurchmesser / Outside diameter
- Ød - Bohrungsdurchmesser / Bore diameter
- ØB - Stördurchmesser / Clearance diameter
- L - Gesamtlänge / Overall length
- S - Spannschrauben / Clamping screw size

Technische Daten / Technical Data

- TKN - Drehmoment / Torque
- TA - Anziehmoment der Spannschraube / Installation torque per screw
- M - Masse / Weight

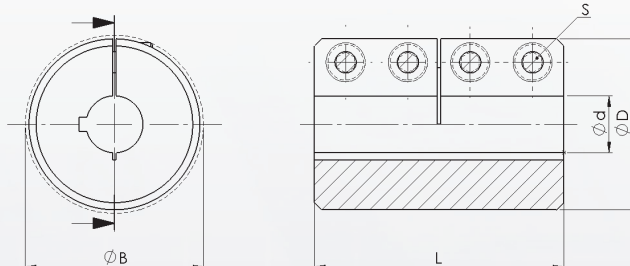
WSR 450

Geschlitzte Schalenkupplung ohne Passfedernut
Rigid Slotted Sleeve Coupling without keyway



WSR 460

Geschlitzte Schalenkupplung mit Passfedernut (DIN 6885)
Rigid Slotted Sleeve Coupling with keyway (DIN 6885)



| Typ / Type | Abmessungen / Dimensions | | | | | |
|------------|--------------------------|-----|------|---------------|-----|------|
| WSR 450 | TKN | L | ØB | S | TA | M |
| ØdxØD | Nm | mm | | ISO 4762-12.9 | Nm | kg |
| 3x14 | 7 | 30 | 18 | M3x8 | 2,1 | 0,04 |
| 4x16 | 8 | 30 | 19,3 | M3x8 | 2,1 | 0,05 |
| 5x18 | 11 | 30 | 21,2 | M3x8 | 2,1 | 0,05 |
| 6x18 | 34 | 30 | 21,2 | M3x8 | 2,1 | 0,05 |
| 8x24 | 50 | 35 | 26,8 | M3x10 | 2,1 | 0,1 |
| 10x29 | 58 | 45 | 32,7 | M4x12 | 4,6 | 0,19 |
| 12x29 | 105 | 45 | 32,7 | M4x12 | 4,6 | 0,18 |
| 14x34 | 160 | 50 | 39,1 | M5x16 | 9,5 | 0,27 |
| 15x34 | 180 | 50 | 39,1 | M5x16 | 9,5 | 0,27 |
| 16x34 | 200 | 50 | 39,1 | M5x16 | 9,5 | 0,26 |
| 19x42 | 300 | 65 | 48,2 | M6x16 | 16 | 0,52 |
| 20x42 | 350 | 65 | 48,2 | M6x16 | 16 | 0,52 |
| 25x45 | 400 | 75 | 50,8 | M6x16 | 16 | 0,62 |
| 30x53 | 475 | 83 | 58,1 | M6x18 | 16 | 0,92 |
| 35x67 | 1100 | 95 | 74,1 | M8x25 | 39 | 1,88 |
| 40x77 | 1325 | 108 | 83,4 | M8x25 | 39 | 2,71 |
| 50x85 | 2250 | 124 | 93,2 | M10x25 | 77 | 3,52 |

| Typ / Type | Abmessungen / Dimensions | | | | | |
|------------|--------------------------|-----|------|---------------|------|------|
| WSR 460 | TKN | L | ØB | S | TA | M |
| ØdxØD | Nm | mm | | ISO 4762-12.9 | Nm | kg |
| 6x18 | 34 | 30 | 21,2 | M3x8 | 2,1 | 0,05 |
| 8x24 | 50 | 35 | 26,8 | M3x10 | 2,1 | 0,1 |
| 10x29 | 58 | 45 | 32,7 | M4x12 | 4,6 | 0,19 |
| 12x29 | 105 | 45 | 32,7 | M4x12 | 4,6 | 0,18 |
| 14x34 | 160 | 50 | 39,1 | M5x16 | 9,5 | 0,27 |
| 15x34 | 180 | 50 | 39,1 | M5x16 | 9,5 | 0,27 |
| 16x34 | 200 | 50 | 39,1 | M5x16 | 9,5 | 0,26 |
| 19x42 | 300 | 65 | 48,2 | M6x16 | 16,0 | 0,52 |
| 20x42 | 350 | 65 | 48,2 | M6x16 | 16,0 | 0,52 |
| 25x45 | 400 | 75 | 50,8 | M6x16 | 16,0 | 0,62 |
| 30x53 | 475 | 83 | 58,1 | M6x18 | 16,0 | 0,92 |
| 35x67 | 1100 | 95 | 74,1 | M8x25 | 39,0 | 1,88 |
| 40x77 | 1325 | 108 | 83,4 | M8x25 | 39,0 | 2,71 |
| 50x85 | 2250 | 124 | 93,2 | M10x25 | 77,0 | 3,52 |

Bestellbeispiel / Ordering Example:

| | | | |
|------------|----|---|----|
| WSR 450 | 14 | x | 34 |
| Typ / Type | Ød | | ØD |

Eigenschaften / Optionen:

- Material: Stahl, oxidiert
- Bohrungstoleranz: +0,05
- Temperaturbereich: -40°C bis +175°C
- max. Drehzahl: 4000 min⁻¹
- wartungsfrei
- starre Kupplung
- mittlere Drehmomente
- schnelle Montage und Demontage

Characteristics / Options:

- Material: steel, oxidized
- bore tolerance: +0,05
- Temperature range: -40°C until +175°C
- max. speed: 4000 min⁻¹
- maintenance-free
- rigid coupling
- average torques
- quick mounting and demounting

